

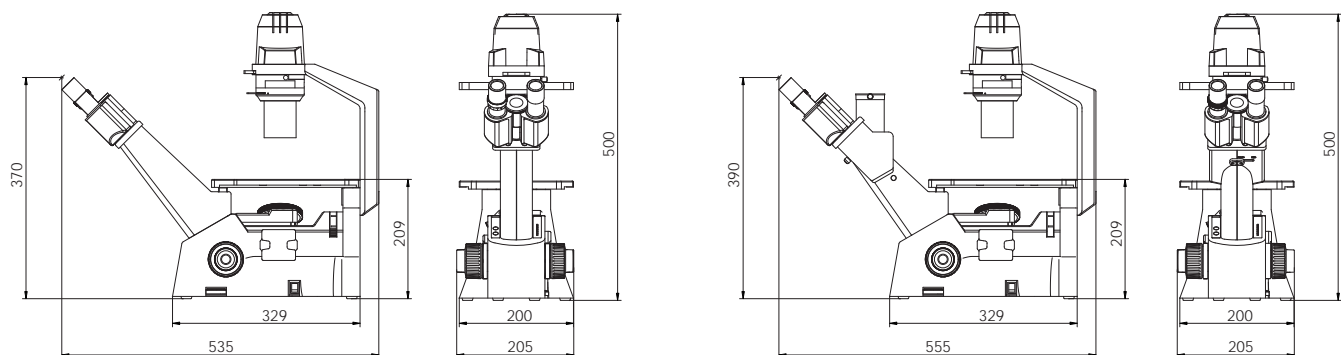
SPECIFICATIONS

MODEL		AE20 Binocular	AE21 Trinocular
Optical System		Colour Corrected Infinity Optical System [CCIS®]	
Observation Tube		Siedentopf Widefield Binocular 45° [F.N. 20]	Siedentopf Widefield Trinocular 45° [F.N. 20] - light distribution 20/80
Viewing Height		370mm	390mm
Nosepiece		Quadruple, left-handed tilt	
Stage	Fixed stage	Stage size: 200x260mm, Stage Height: 207mm, Auxiliary stages available	
	Mechanical	Attachable mechanical stage with well plate holders, Ø35mm, Ø54mm, and Ø65mm petri dish holders, Haemocytometer holder	
Condenser		ELWD N.A. 0.30 (W.D. 72mm) slider stop	
Slider		Centrable phase slider [PH 1, 2 empty positions], PH 3 phase annulus ring	
Illumination	Source	6V/30W Quartz Halogen built-in lamp; built-in heat absorbing filters	
	Filter holder	Slide out holder for Ø45mm Blue, Didymium and Green Interference filters	
Focus		Z-axis movement via nosepiece with 10mm stroke movement; 2µm minimum increment; silicon coated	
Eyepieces		WF High Eyepoint 10X/20mm; WF High Eyepoint 15X/13mm	
Objectives		CCIS® E Plan Achromat Inverted; CCIS® E Plan Achromat LWD Inverted; CCIS® E Plan Achromat Phase Inverted; CCIS® E Plan Achromat Phase LWD Inverted	
Documentation	Photomicro-graphy	2.5X SLR Projection Lens, 2.5X and 4X photo eyepiece	
	Digital/Video	0.5X c-mount camera adapter [1/2" chip sensor] 0.65X c-mount camera adapter [2/3" chip sensor] 1.0X c-mount camera adapter [no lens]	
Power Consumption		Universal power supply 100-240V, 50/60Hz, 35W	
Weight		10.7Kgs	

SCHEMATIC DIAGRAMS

AE20 Binocular

AE21 Trinocular



UNIT : MM