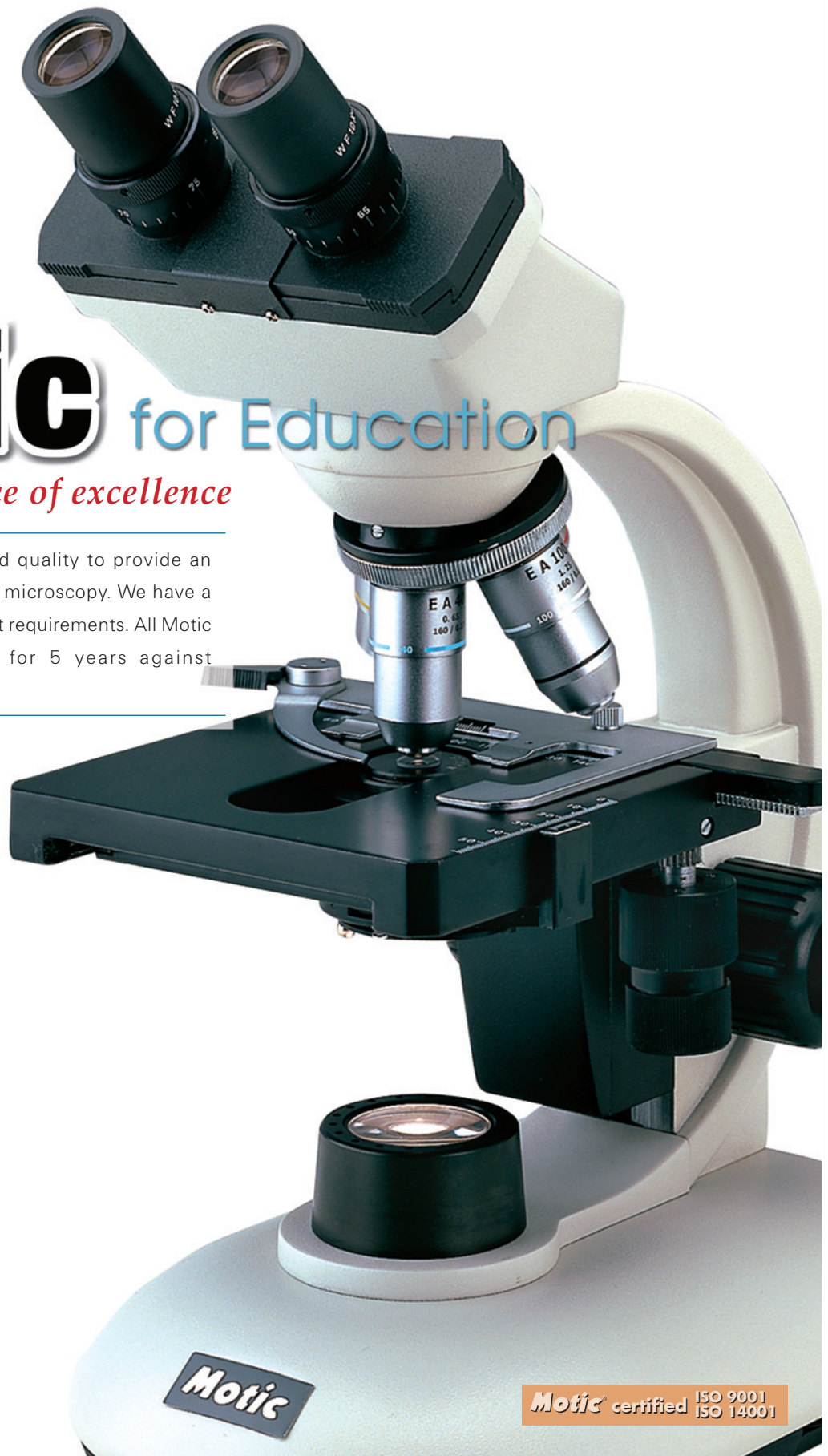


Motic[®] *Microscopes*

Motic for Education

Your ultimate source of excellence

Motic combines consistency and quality to provide an excellent standard of viewing for microscopy. We have a wide choice of models for different requirements. All Motic microscopes are guaranteed for 5 years against manufacturer's workmanship.



Motic certified ISO 9001
ISO 14001

F11 series basic biological microscopes

A perfect tool for school applications

Special features :-

- High quality DIN Achromatic standard optics
- Student proof features to minimize damage and loss of parts



F1110

Model F1110

PF50.213.201

- Monocular head, inclined 45° and 360° rotating
- Eyeiece : Widefield WF10x (FN18)
- Objective : Achromatic A4x/0.10, A10x/0.25, A40x/0.65 (spring)
- Nosepiece : Quadruple nosepiece
- Condenser : Built in 0.65 condenser on stage
- Focusing : Separate coarse and fine focusing adjustment
- Diaphragm : Iris diaphragm with filter holder (Ø32mm blue filter included)
- Illumination : Built in halogen illumination 12V/10W main supply 220-240V VDE plug CE



F1115

Model F1115

PF50.223.201

- Monocular head, inclined 45° and 360° rotating
- Eyeiece : Widefield WF10x (FN18)
- Objective : Achromatic A4x/0.10, A10x/0.25, A40x/0.65 (spring)
- Nosepiece : Quadruple nosepiece
- Condenser : Focusable 1.25 abbe condenser
- Focusing : Separate coarse and fine focusing adjustment
- Diaphragm : Iris diaphragm with filter holder (Ø32mm blue filter included)
- Illumination : Built in halogen illumination 12V/10W main supply 220-240V VDE plug CE

Model F1125

PF60.223.201

- Dual view head, 360° rotating
- Eyeiece : Widefield WF10x (FN18) (paired)
- Objective : Achromatic A4x/0.10, A10x/0.25, A40x/0.65 (spring)
- Nosepiece : Quadruple nosepiece
- Condenser : Focusable 1.25 Abbe condenser
- Focusing : Separate coarse and fine focusing adjustment
- Diaphragm : Iris diaphragm with filter holder (Ø32mm blue filter included)
- Illumination : Built in halogen illumination 12V/10W main supply 220-240V VDE plug CE



F1125

Optional Accessories

Eyepieces

- 53.100.141 Huygens eyepiece H5x / 14.5mm
- 53.100.143 Widefield eyepiece WF15x / 12mm
- 53.100.144 Huygens eyepiece H15x / 8mm

Micrometer Eyepieces

- 53.100.145 Micrometer eyepiece WF10x/18mm, 100 divisions in 10mm
- 12.180.143-R Reticle 19mm (for 18mm eyepiece), 100 divisions in 10mm
- 12.180.143-H Reticle holder

Achromatic Objectives

- 53.100.163 Achromatic objective 20x / 0.4
- 53.100.165 Achromatic objective 60x / 0.85 / S
- 53.100.168 Achromatic objective 100x / 1.25 / S-oil

Photo and CCD Adapters

- 53.100.181 Photo adapter
- 53.100.182 CCD adapter

Spare Parts

- 53.100.251 Mechanical stage MSH-008
- 53.100.271 Polarizing equipment B201
- 53.100.253 Blue filter
- 53.100.254 Dust cover (Size B)
- 53.100.255 42mm plano-concave mirror and fork
- 53.100.256 Plastic carrying case
- 53.100.258 Wooden box (made in Spain)

Spare Bulbs

- 53.100.259 Halogen bulb 12V/10W

Motic 18 and 28 series biological microscopes

Combination of a traditional microscope with modern design

- Modern design on appearance
- Superb optical quality with new design in Achromatic objectives (the new EA objectives)
- Good quality illumination by 12V/20W halogen bulb with dimmer
- Choice of simple stage version or a built in mechanical stage version
- Choice of simple coarse and fine separate focusing system or a NEW and reliable coaxial focusing system



1801

Model 1801 PD80.413.201
 Monocular head, inclined 45° and 360° rotating
 Eyepiece : Widefield WF10x (FN18)
 Objective : Achromatic EA 4x/0.10, EA10x/0.25, EA40x/0.65 (spring)
 Nosepiece : Quadruple nosepiece (ball bearing type)
 Condenser : Built in 0.65 condenser on stage
 Focusing : Separate coarse and fine focusing adjustment
 Diaphragm : Iris diaphragm with filter holder (Ø32mm blue filter included)
 Illumination : Built in halogen illumination 12V/20W with intensity control
 Main supply 230V VDE plug CE



1802

Model 1802 PD85.423.201
 Monocular head, inclined 45° and 360° rotating
 Eyepiece : Widefield WF10x (FN18)
 Objective : Achromatic EA 4x/0.10, EA10x/0.25, EA40x/0.65 (spring)
 Nosepiece : Quadruple nosepiece (ball bearing type)
 Condenser : Focusable 1.25 Abbe condenser (spiral mount type)
 Focusing : Separate coarse and fine focusing adjustment
 Diaphragm : Iris diaphragm with filter holder (Ø32mm blue filter included)
 Stage : Built in low position coaxial mechanical stage
 Illumination : Built in halogen illumination 12V/20W with intensity control
 Main supply 230V VDE plug CE



1820

Model 1820 PD87.423.201
 Binocular head, inclined 45° and 360° rotating
 Eyepiece : Widefield WF10x (FN18) (paired)
 Objective : Achromatic EA 4x/0.10, EA10x/0.25, EA40x/0.65 (spring)
 Nosepiece : Quadruple nosepiece (ball bearing type)
 Condenser : Focusable 1.25 Abbe condenser (spiral mount type)
 Focusing : Separate coarse and fine focusing adjustment
 Diaphragm : Iris diaphragm with filter holder (Ø32mm blue filter included)
 Stage : Built in low position coaxial mechanical stage
 Illumination : Built in halogen illumination 12V/20W with intensity control
 Main supply 230V VDE plug CE

Model 2801 PD90.423.201
 Monocular head, inclined 45° and 360° rotating
 Eyepiece : Widefield WF10x (FN 18)
 Objective : Achromatic EA 4x/0.10, EA10x/0.25, EA40x/0.65 (spring)
 Nosepiece : Quadruple nosepiece (ball bearing type)
 Condenser : Focusable 1.25 Abbe condenser (spiral mount type)
 Focusing : NEW coaxial coarse and fine focusing adjustment
 Diaphragm : Iris diaphragm with filter holder (Ø32mm blue filter included)
 Illumination : Built in halogen illumination 12V/20W with intensity control
 Main supply 230V VDE plug CE



2801



2802

Model 2802 PD95.423.201
 Monocular head, inclined 45° and 360° rotating
 Eyepiece : Widefield WF10x (FN 18)
 Objective : Achromatic EA 4x/0.10, EA10x/0.25, EA40x/0.65 (spring)
 Nosepiece : Quadruple nosepiece (ball bearing type)
 Condenser : Focusable 1.25 Abbe condenser (spiral mount type)
 Focusing : NEW coaxial coarse and fine focusing adjustment
 Diaphragm : Iris diaphragm with filter holder (Ø32mm blue filter included)
 Stage : Built in low position coaxial mechanical stage
 Illumination : Built in halogen illumination 12V/20W with intensity control
 Main supply 230V VDE plug CE

Motic 18 and 28 series biological microscopes



2820

Model 2820 PD97.423.201

Binocular head, inclined 45° and 360° rotating
 Eyepiece : Widefield WF10x (FN 18) (paired)
 Objective : Achromatic EA 4x/0.10, EA10x/0.25, EA40x/0.65 (spring)
 Nosepiece : Quadruple nosepiece (ball bearing type)
 Condenser : Focusable 1.25 Abbe condenser (spiral mount type)
 Focusing : NEW Coaxial coarse and fine focusing adjustment
 Diaphragm : Iris diaphragm with filter holder (Ø32mm blue filter included)
 Stage : Built in low position coaxial mechanical stage
 Illumination : Built in halogen illumination 12V/20W with intensity control
 Main supply 230V VDE plug CE

Optional Accessories

Eyepieces

53.100.141 Huygens eyepiece H5x / 15mm
 53.100.143 Widefield eyepiece WF15x / 12mm

Micrometer Eyepieces

12.180.143 Micrometer eyepiece WF10x / 18mm, 100 divisions in 10mm
 12.180.143-R Reticle 19mm (for 18mm eyepiece), 100 divisions in 10mm
 12.180.143-H Reticle holder

Achromatic Objectives (EA)

12.180.163 Achromatic objective 20x / 0.25
 12.180.165 Achromatic objective 60x / 0.85 / S
 12.180.168 Achromatic objective 100x / 1.25 / S-oil



Photo and CCD Adapters

53.100.181 Photo adapter
 53.100.182 CCD adapter

Spare Parts

12.180.251 Mechanical stage MSH-008A
 12.180.252 Mechanical stage MSH-010
 12.220.271 Polarizing equipment B208
 53.100.253 Blue filter
 53.100.254 Dust cover (size B)
 12.180.256 Wooden box (made in Spain)

Spare Bulbs

12.180.258 Halogen bulb 12V/20W

Motic B1 series biological microscopes

Get a research-quality microscope at a very affordable price



B1-211A

Model B1-211A PB10.201.201

Monocular head, inclined 45° and 360° rotating
 Eyepiece : Widefield WF10x (FN18)
 Objective : Plan achromatic PL4x /0.10, achromatic A10x/0.25, A40x/0.65 (spring), A 100x/1.25 (oil. spring)
 Nosepiece : Quadruple nosepiece (ball bearing type)
 Condenser : Focusable 1.25 Abbe condenser (rack and pinion type)
 Focusing : Coaxial coarse and fine focusing adjustment
 Diaphragm : Iris diaphragm with filter holder (Ø32mm blue filter included)
 Stage : Built in low position coaxial mechanical stage
 Illumination : Built in halogen illumination 12V/20W with intensity control
 Main supply 220-240V VDE Plug CE



Model B1-220A PB12.201.201

Binocular head, inclined 45° and 360° rotating
 Eyepiece : Widefield WF10x (FN18) (paired)
 Objective : Plan achromatic PL4x/0.10, achromatic A10x/0.25, A40x/0.65 (spring), A 100x/1.25 (oil. spring)
 Nosepiece : Quadruple nosepiece (ball bearing type)
 Condenser : Focusable 1.25 Abbe condenser (rack and pinion type)
 Focusing : Coaxial coarse and fine focusing adjustment
 Diaphragm : Iris diaphragm with filter holder (Ø32mm blue filter included)
 Stage : Built in low position coaxial mechanical stage
 Illumination : Built in halogen illumination 12V/20W with intensity control
 Main supply 220-240V VDE Plug CE



B1-220A

Motic B1 series biological microscopes

Model B1-223A PB13.201.201

- Trinocular head inclined 30° and 360° rotating*
- Eye-piece** : Widefield WF10x (FN18) (paired)
- Objective** : Plan achromatic PL4x /0.10, achromatic A10x /0.25, A40x /0.65 (spring), A100x /1.25 (oil, spring)
- Nosepiece** : Quadruple nosepiece (ball bearing type)
- Condenser** : Focusable 1.25 Abbe condenser (rack and pinion type)
- Focusing** : Coaxial coarse and fine focusing adjustment
- Diaphragm** : Iris diaphragm with filter holder (Ø32mm blue filter included)
- Stage** : Built in low position coaxial mechanical stage
- Illumination** : Built in halogen illumination 12V/20W with intensity control
- Main supply** 220-240V VDE Plug CE
- Standard CCD & photo adaptors included



B1-223A

Model B1-223ASC PB12.214.201

- Trinocular head, inclined 30° and 360° rotating*
- Eye-piece** : Widefield WF10x (FN20) (paired)
- Objective** : Achromatic Super Contrast Objectives
ASC 4x /0.10, ASC10x /0.25, ASC40x /0.65 (spring),
ASC100/1.25 (oil, spring)
- Nosepiece** : Quadruple nosepiece (ball bearing type)
- Condenser** : Focusable 1.25 abbe condenser (rack and pinion type)
- Focusing** : Coaxial coarse and fine focusing adjustment
- Diaphragm** : Iris diaphragm with filter holder (Ø32mm blue filter included)
- Stage** : Built in low position coaxial mechanical stage
- Illumination** : Built in halogen illumination 12V/20W with intensity control
- Main supply** 220-240V VDE Plug CE
- Standard CCD & photo adaptors included



B1-223ASC

Model B1-220ASC PB12.213.201

- Binocular head, inclined 45° and 360° rotating*
- Eye-piece** : Widefield WF10x (FN20) (paired)
- Objective** : Achromatic Super Contrast Objectives
ASC 4x /0.10, ASC10x /0.25, ASC40x /0.65 (spring),
ASC100x /1.25 (oil, spring)
- Nosepiece** : Quadruple nosepiece (ball bearing type)
- Condenser** : Focusable 1.25 Abbe condenser (rack and pinion type)
- Focusing** : Coaxial coarse and fine focusing adjustment
- Diaphragm** : Iris diaphragm with filter holder (Ø32mm blue filter included)
- Stage** : Built in low position coaxial mechanical stage
- Illumination** : Built in halogen illumination 12V/20W with intensity control
- Main supply** 220-240V VDE Plug CE



B1-220ASC



Optional Accessories

- | | | |
|---|--|---|
| <p>Eye-pieces</p> <p>53.100.141 Huygens eyepiece H5x / 14.5mm
12.220.145 Widefield eyepiece WF10x / 20mm
53.100.143 Widefield eyepiece WF15x / 12mm
12.220.141 Widefield eyepiece WF20x / 11mm</p> <p>Micrometer Eye-pieces</p> <p>12.220.146 Micrometer eyepiece 10x / 18mm, 100 divisions in 10mm
12.180.143-R Reticle 19mm (for 18mm eyepiece), 100 divisions in 10mm
12.180.143-H Reticle holder</p> <p>Achromatic Objectives</p> <p>12.220.163 Achromatic objective 20x / 0.4
12.220.165 Achromatic objective 60x / 0.85 / S</p> <p>Polarizing Set</p> <p>12.220.271 Polarizing set B.208
12.220.270 Polarizing set B.208NT (without rotating table)</p> <p>Phase Contrast and Darkfield Accessories</p> <p>12.220.265 Plan objective 10x PH
12.220.266 10x phase contrast attachment (simple plug in type)</p> | 



 | <p>12.220.260 Plan objective 40x PH
12.220.261 40x phase contrast attachment (simple plug in type)
12.220.280 Centering telescope
12.220.275 Darkfield attachment (simple plug in type)</p> <p>Photo and CCD Adapters</p> <p>12.220.201-2.5 Photo adapter 2.5x
12.220.201-4 Photo adapter 4x
12.220.202-0.5 CCD adapter 0.5x
12.220.202-1 CCD adapter 1x</p> <p>Spare Parts</p> <p>53.100.253 Blue filter
12.220.301 Green filter
12.220.302 Yellow filter
12.220.357 Eyecups (pair)
12.220.303 Dust cover (size C)
12.220.304 Mirror and fork attachment
12.220.305 Wooden case (made in Spain)</p> <p>Spare Bulbs</p> <p>12.180.258 Halogen bulb 12V/20W</p> |
|---|--|---|

PM series petrographic microscopes



PM-1805

Model PM-1805 PD84.423.201

Monocular head 45° inclined 360° rotating
 Widefield Eyepiece WF10x (FN 18) (cross reticle)
 Objective : Achromatic EA 4x/0.10, EA10x/0.25, EA40x/0.65 (spring)
 Nosepiece : Quadruple nosepiece (ball bearing type)
 Condenser : Focusable 1.25 N.A. abbe condenser (spiral mount type)
 Focusing : Separate coarse and fine focusing adjustment
 Diaphragm : Iris diaphragm with filter holder (Ø32mm blue filter included)
 Stage : Working table rotating from 0-360° with graduations to 1°
 Illumination : Built in halogen illumination 12V/20W with intensity control
 Main supply 230V VDE plug CE
 With simple add on type analyzer and polarizer



PM-2805

Model PM-2805 PD94.423.201

Monocular head 45° inclined 360° rotating
 Widefield Eyepiece WF10x (FN 18) (cross reticle)
 Objective : Achromatic EA 4x/0.10, EA10x/0.25, EA40x/0.65 (spring)
 Nosepiece : Quadruple nosepiece (ball bearing type)
 Slide in analyzer provides choice of 4λ, plate or λ, plate and bertrand lens
 Condenser : Focusable 1.25 N.A. abbe condenser (spiral mount type)
 Focusing : Coaxial coarse and fine focusing adjustment
 Diaphragm : Iris diaphragm with filter holder (Ø32mm blue filter included)
 Stage : Working table rotating from 0-360° with graduations to 1°
 Illumination : Built in halogen illumination 12V/20W with intensity control
 Main supply 230V VDE plug CE

Optional Accessories

Eyepieces

53.100.141 Huygens eyepiece H5x / 14.5mm
 12.180.144 Widefield eyepiece WF15x / 12mm

Micrometer Eyepieces

12.181.143 Micrometer eyepiece 10x / 18mm, 100 divisions in 10 mm
 12.180.145 Widefield eyepiece 10x / 18mm (cross reticle)
 12.180.143-R Reticle 19mm (for 18mm eyepiece), 100 divisions in 10mm
 12.180.145-R Cross reticle 19mm (for 18mm eyepiece)
 12.180.143-H Reticle holder

Achromatic Objectives

12.180.163 Achromatic objective 20x / 0.40
 12.180.165 Achromatic objective 60x / 0.85 / S

Photo and CCD Adapters

53.100.181 Photo adapter
 53.100.182 CCD adapter

Spare Parts

53.100.253 Blue filter
 53.100.254 Dust cover (size B)
 12.180.256 Wooden box (made in Spain)

Spare Bulbs

12.180.258 Halogen bulb 12V/20W

Motic ST-39 series stereo microscopes

This series provides very good 3D image with high resolution image. Modern design which is the best tool for all applications.



ST-39C-N9GO

Model ST-39C-N9GO PS39.476.201

Binocular head 45° inclined, 360° rotating,
Widefield eyepiece WF10x (FN 20) (paired)
Objective : Turret type 2x, 4x
Incident light halogen12V/10W and transmitted light tungsten 12V/10W

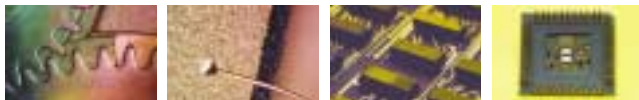
Main supply 220V-240V, VDE plug CE



ST-39Z-N9GO

Model ST-39Z-N9GO PS39.774.201

Binocular head 45° inclined, 360° rotating,
Widefield eyepiece WF10x (FN 20) (paired)
Zoom objective : 1x-3x
Incident light halogen12V/10W and transmitted light tungsten 12V/10W
Main supply 220V-240V, VDE plug CE



Optional Accessories

Eyepieces

- 51.020.141 Widefield eyepiece WF 5x / 22mm
- 51.020.144 Widefield eyepiece WF15x / 13mm
- 51.020.145 Widefield eyepiece WF20x / 10mm

Micrometer Eyepieces

- 51.020.143 Micrometer eyepiece WF10x / 20mm with built in micrometer, 100 divisions in 10mm

Polarizing and Darkfield Attachments

- 51.030.261 Darkfield condenser with iris diaphragm
- 51.030.262 Polarizing equipment B301
- 51.030.263 Jewellery clamp

Spare Parts

- 51.039.251-W White stage plate, diameter 80mm
- 51.039.251-B Black stage plate, diameter 80mm
- 51.039.251-F Frosted stage plate, diameter 80 mm

53.100.254

- Dust cover (size B)
- 51.020.254 Eyecups (pair)
- 11.039.252 Wooden box (made in Spain)

Spare Bulbs

- 53.100.259 Halogen bulb 12V/10W (incident)
- 51.010.351 Tungsten bulb 12V/10W (transmitted)

Motic SFC-11 series advanced stereo microscopes

Excellent optical quality in both resolution and contrast, extra long working distance even for the most demanding applications.



SFC-11C-2LBB

Model SFC-11C-2LBB

A : PX11.261.201
B : PX11.361.201
C : PX11.461.201

Binocular head 45° inclined, 360° rotating,
Widefield eyepiece WF10x (FN 20) (paired)
Objective C : 2x, 4x
Incident light tungsten 12V/10W and transmitted light tungsten 12V/10W
Main supply 220V-240V, VDE plug CE
Fixed arm type



SFC-12C-2LBB

Model SFC-12C-2LBB

A : PX12.261.201
B : PX12.361.201
C : PX12.461.201

Trinocular head 45° inclined, 360° rotating,
Widefield eyepiece WF10x (FN 20) (paired)
Objective C : 2x, 4x
Incident light tungsten 12V/10W and transmitted light tungsten 12V/10W
Main supply 220V-240V, VDE plug CE
CCD and photo adapters included
Fixed arm type

Optional Accessories

Eyepieces

51.020.141 Widefield eyepiece WF 5x / 22mm
51.020.144 Widefield eyepiece WF 15x / 13mm
51.020.145 Widefield eyepiece WF 20x / 10mm



53.100.254 Dust cover (size B)
51.020.254 Eyecups (pair)
11.012.253 Wooden box (made in Spain)

Micrometer Eyepieces

51.020.143 Micrometer eyepiece WF10x / 20mm with built in micrometer, 100 divisions in 10mm

Spare Bulbs

51.010.351 Tungsten bulb 12V/10W

Polarizing and Darkfield Attachments

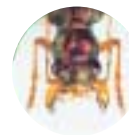
51.030.261 Darkfield condenser with iris diaphragm
51.030.262 Polarizing equipment
51.030.263 Jewellery clamp

Spare Parts

51.020.251 Black / white stage plate, diameter 80mm
51.020.252 Frosted glass stage plate, diameter 80mm

PS-2 simple biological microscopes

A simple model using daylight for operation and can be easily carried around for field trips



PS-2

Model PS-2

PT12.002.001

Eyepiece : Huygen H10x
Magnification: 27x

Motic[®] Microscopes

A registered trade mark of Speed Fair Co., Ltd. (Hong Kong)

Electrical All electrical parts are arranged accorded according to CE, VDE, UL and CSA requirements.

Five Year Warranty All Motic instruments are warranted against defects in materials and workmanship for five years. Damage resulted from repair by unauthorized parties or damage due to accident, alteration, misuse or abuse is not covered. Warranty service is provided by Speed Fair Co., Ltd. or its authorized dealers. Defective Motic instruments covered by the warranty will be repaired free of charge when they are returned, postpaid, to Speed Fair Co., Ltd. or its authorized dealers in your region.

Design Change The manufacturer reserves the right to make changes in instrument design in accordance with scientific and mechanical progress, without notice and without obligation.

Web Site : <http://www.motic.com>

Motic[®] certified ISO 9001
ISO 14001

